

lifestyle

& PORCELANOSA

Issue 11 / 5 euros

SPACES
KITCHENS
STRUCTURES
BATHROOMS

Smart **AVANT-GARDE**

THE UNITED KINGDOM SETS THE TREND

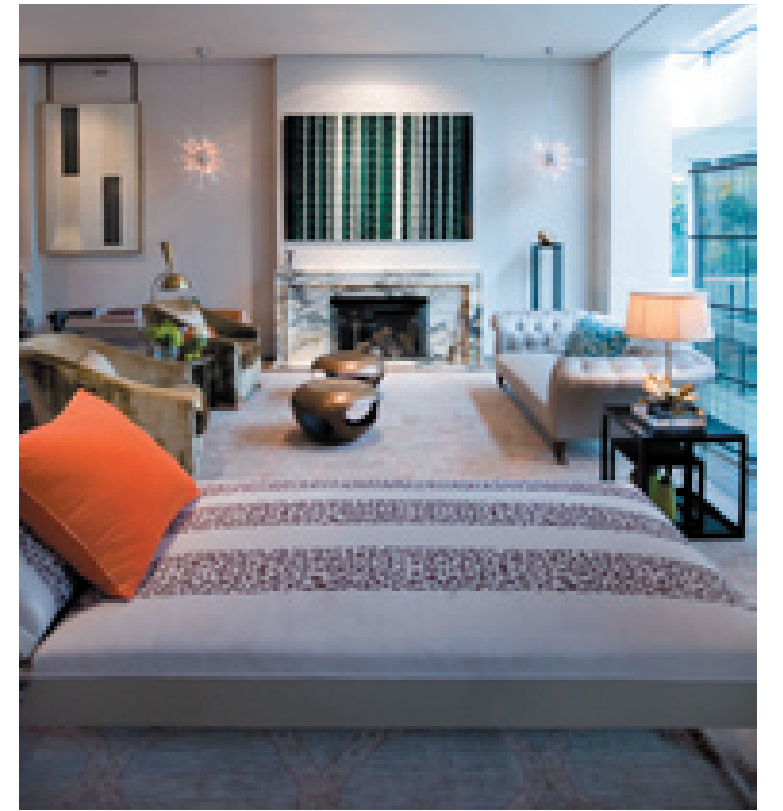
In the London borough of Kensington, owner Emma Roig opens the doors of her home for us, where her good taste and personal details reinforce a very luminous whole.

Photos: DANIEL BALDA/MARIA SEJAS

DOWN TOWN

20 / 21
lifestyle

INDOORS



OPPOSITE PAGE
The lounge, whose pieces of furniture balance the whole atmosphere. Natural wood floor, Oak Residence Grey model, polished and bevelled, from L'Antic Colonial. Lama Provenza 12.7 x 180.14 cm. Natural finish.
RIGHT, the black chair, her favourite, is a work from Dutch artist Fritz Henningsen. She acquired it at a Brussels antique fair. The painting

behind the black chair is what the English call an "Old Master Painting" from 1570, acquired at an auction. The 50s table lamp beside the black chair was acquired in Avignon. All these one-off pieces contrast with *avant-garde* armchairs and furniture.

Emma Roig, a journalist from Valencia with a cosmopolitan spirit opens the doors of her home for us in Kensington, a London borough with original Georgian-style structures. Over the classical style of the area and throughout the ages, singular dwellings have been rehabilitated and refurbished, in which the classical past and *avant-garde* designs live together.

Emma was very clear the moment she found this house... Although it was impossible to restore it while maintaining its original style, she knew at once this had to be her London home. At last she decided to create a play of contrasts. The spaces perfectly reflect the personality of her owner and her endless curiosity for every place she travels and finds beautiful and



original things to bring back with her. From architecture to interior decoration, her home is a winning mixture of time, travels and an exceptional taste.

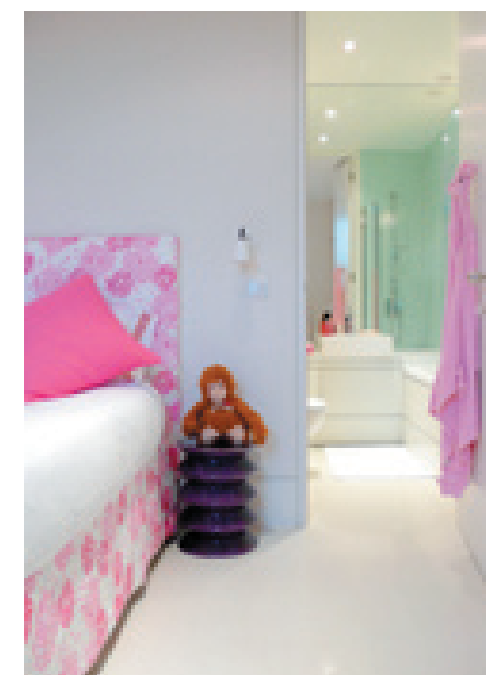
"The remodelling lasted two years, a period which we devoted to tour interesting places. All through our travels to Parma, Avignon, Paris, Montpellier, L'Isle-sur-la-Sorgue and Brussels, I got to compile pieces found in markets and antique dealers. There are other works acquired at the Christie's auction house both in London and New York, a city I lived in for many years". The collection of objects decorating the different rooms don't follow



A magic corner: the yellow of the auxiliary table and the little cobalt blue armchairs highlight the austerity of the classical painting. LEFT. Levels, entrances and ways out: like in a play of spaces, the house opens to new interconnected spaces. A detail of a lounge opening to the little chamber with the yellow table. All floorings are made in natural unvarnished oak. OPPOSITE PAGE. Above. Natural wood stairs from L'Antic Colonial, White Thule Bevelled Oak model.



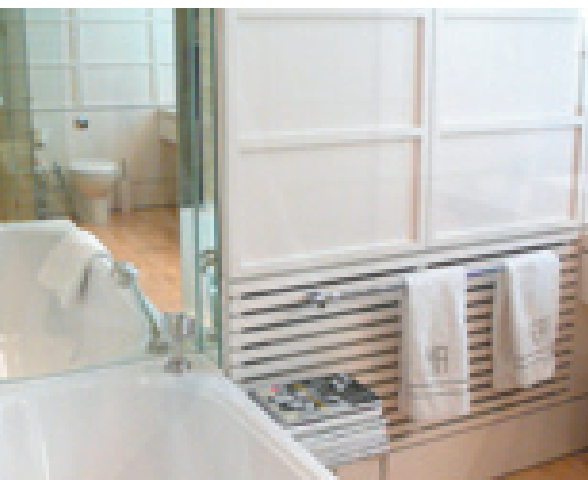
ABOVE ON THE RIGHT In the main bedroom, this bronze sun is an original piece by the Dutch artist Georges van der Straeten acquired at a Paris boutique. RIGHT. The room where pink prevails is her daughter Clara's. The room with patterned animals in the bedspread is Paquito's, and the other one, with a blue sofa and a wicker basket full of cuddly toys is Alejandro's, her elder son. The kids' bathroom is made with blue mosaics from Porcelanosa. Children's bathroom. Multicolour Blue model 20 x 31.6 cm, from Porcelanosa, combined with Marmi China Matt, measuring 31.6 x 90 cm in the covering and 31.6 x 31.6 cm in the paving.



any particular style – they are an open book, brimming with different experiences that join very trendy furniture and structures to deliver a delicate and uniquely balanced whole. Emma's Mediterranean hand is very noticeable in warm atmospheres such as the kitchen and bathrooms. In the kitchen, for instance, Carrara marble-tops contrast with the lead-grey efficiency of the floorings, all of them made with materials from the **Porcelanosa Group**.

For Emma, using marble for the kitchen is a lifelong, well-established thing. "In Valencia, it is very common", she says. "It is so at my mother's, my grandmother's..."

"Besides, I like it because it is resistant, immune to use and wear, which is essential in a kitchen."



THIS PAGE
A quest for luminosity and maximum comfort in the bathroom floorings and coverings. In the photographs, the Travertine Beige Protegido model. V103 model bath, from System-Pool. Showers from Noken, shower screen from System-Pool. Krion washbasin from Noken and tap gear from Noken.



THIS PAGE
In the kitchen, Carrara marble tops contrast with the grey floor, made entirely from the Cemento Manhattan model from Porcelanosa (Ston-Ker). The kitchen furniture is from Gamadecor.

In this case, and very rightly, she finally went for the anthracite grey from the Ston-Ker line. The kitchen opens onto the garden through large French windows. Emma wanted to create a feel of continuity between these two spaces - so essential for her - in her home. **Porcelanosa** impressed her as ideal, since it offers different kinds of flooring for interior spaces, and also anti-slip flooring options for exterior spaces, as is the case of her garden, arranged in different heights. "These kinds of anti-slip surfaces are really convenient for such a rainy city as this."
"I think that light is an essential element, and the garden in this house was the kind of thing that we were looking for. Its size and southern orientation is very hard to find inside the city." So as to enhance the garden, there are big windows all round the house overlooking it and bathing the house in light. "As a good Valencian, I really need light." Emma has achieved in central London a house according to her Mediterranean spirit. //



THE GARDEN:
The kitchen opens onto the garden through large French windows. She wanted to convey a sense of continuity between these two spaces. She found Porcelanosa ideal to this end, since it offers interior surfaces and similar anti-slip options for exterior spaces.

